

How to rotate an Astro City monitor

Tools needed:

A Dave

A 12 or 13mm socket.

A Philip's Screwdriver.

An Astro City



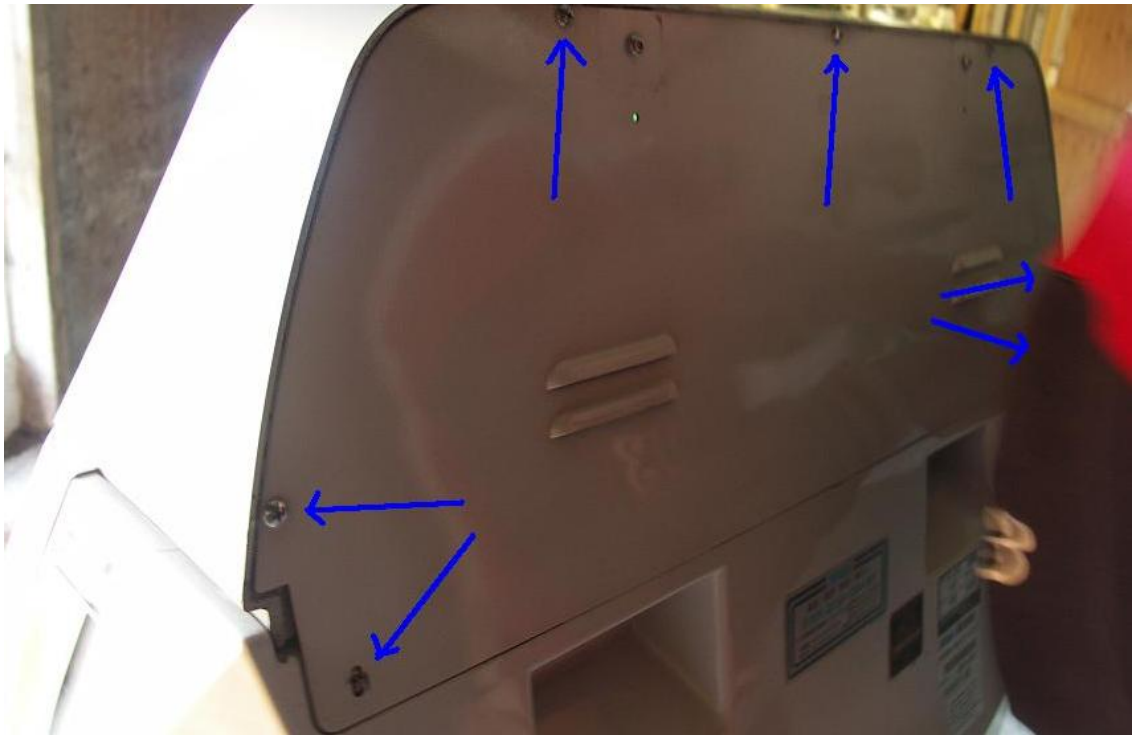
1) Under the control panel are two locks, which open with a Sega 5380 key. A key needs to be in each side to open the control panel.



Turn both keys and lift the control panel from the back end (where the instruction strip is) - it flips back toward you.



2) Move to the back of the machine - you need to take off the back section. Remove the seven screws pictured. The bottom two are often longer - so remember where these go.



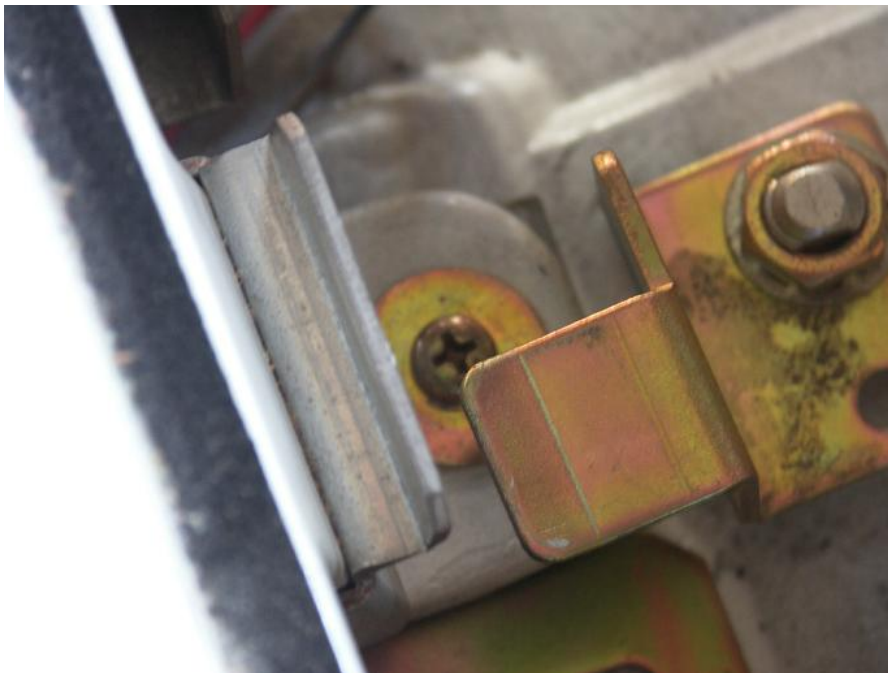


3) Move to the front of the machine and remove the three screws that are holding down the monitor surround section.

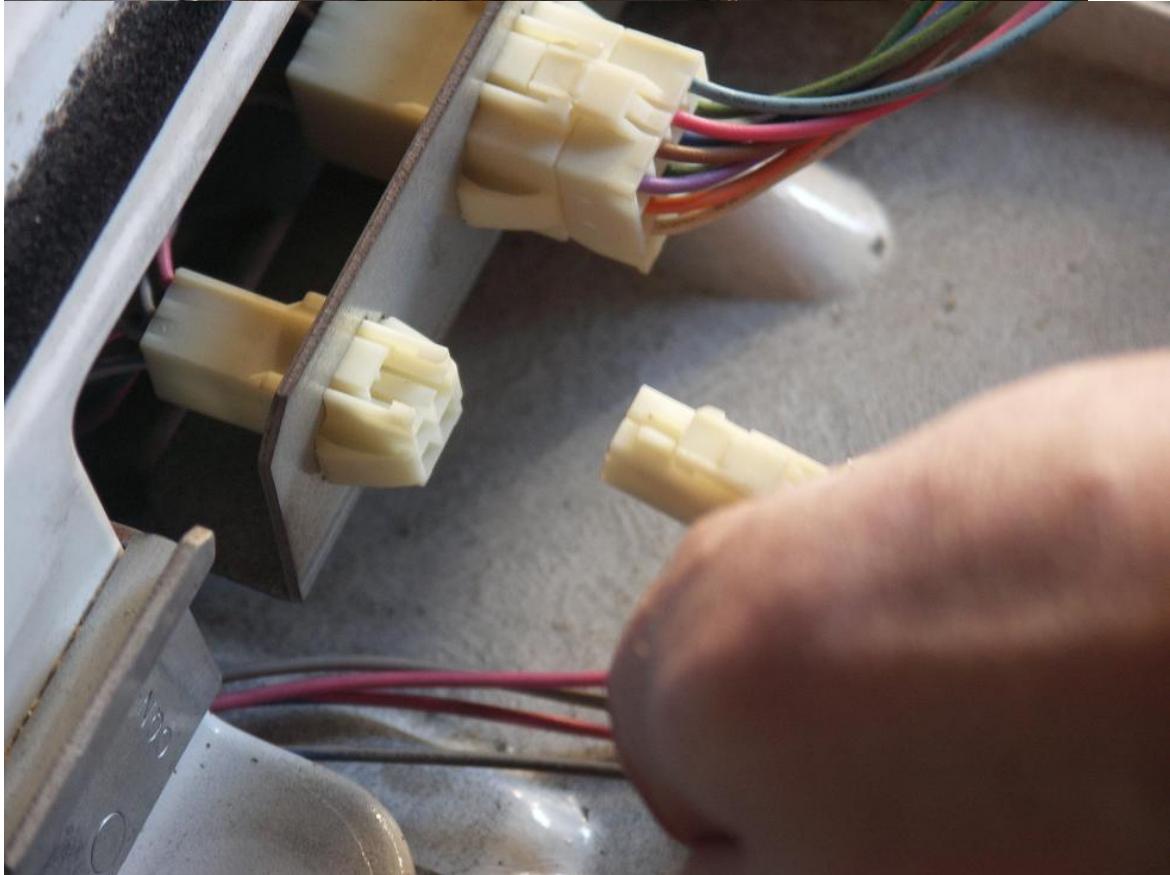
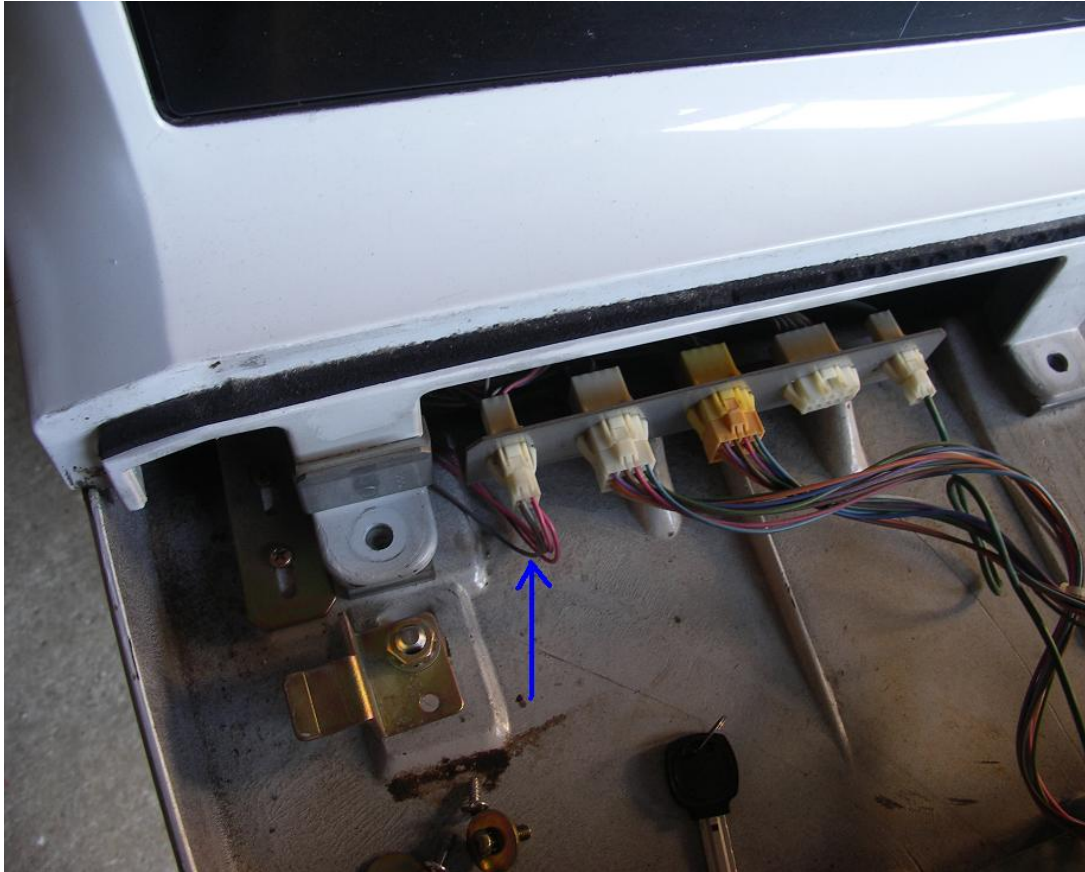




One is right next to the lock catch on the left hand side of the control panel - so you may have to turn the key to get the catch out of the way.



4) Remove the plug pictured by pinching it between your fingers and pulling towards you. If you follow this back - you'll find it is wired along the side of the monitor surround section. If you tried to take off the top section without doing this - you'll feel it pull back.



5) Get someone awesometastic like Dave to take off the top section while you take pics 😂



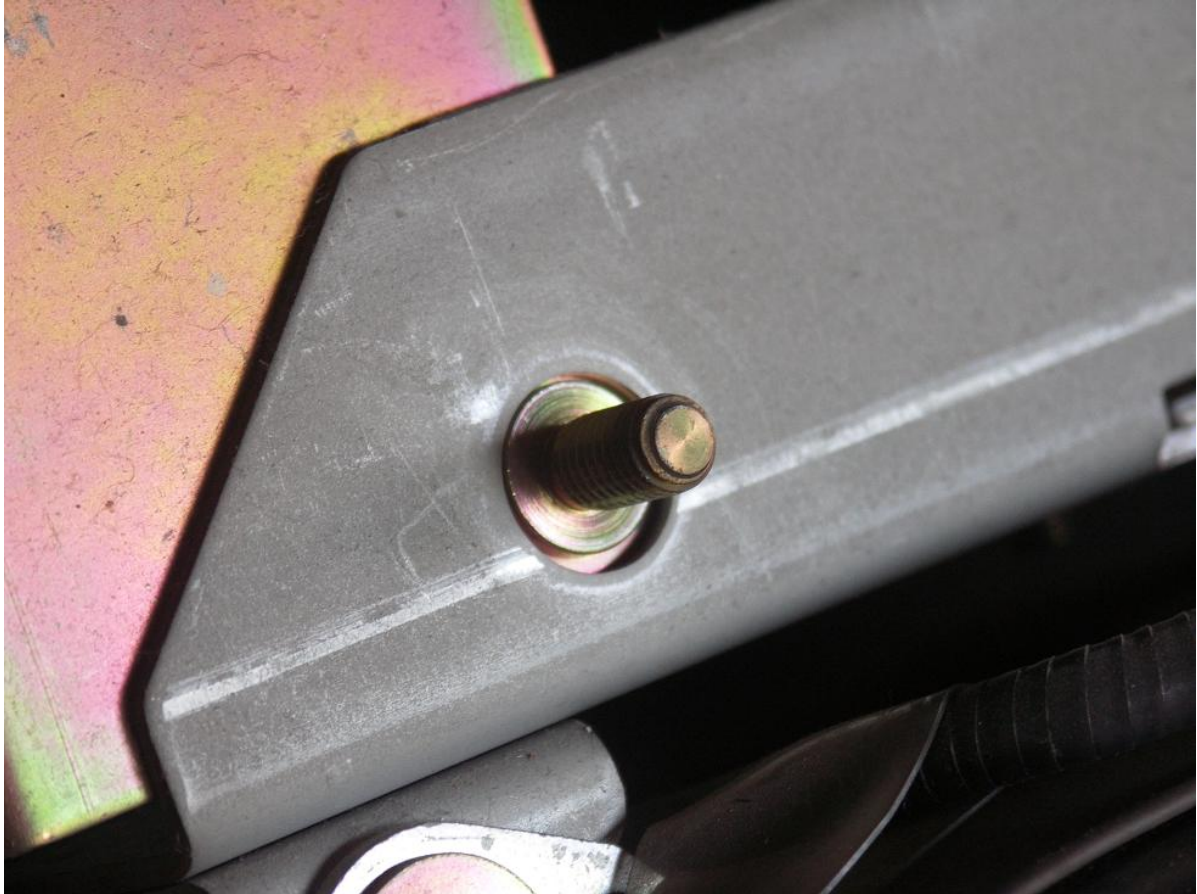


6) Remove four bolts with a 12 or 13mm socket.

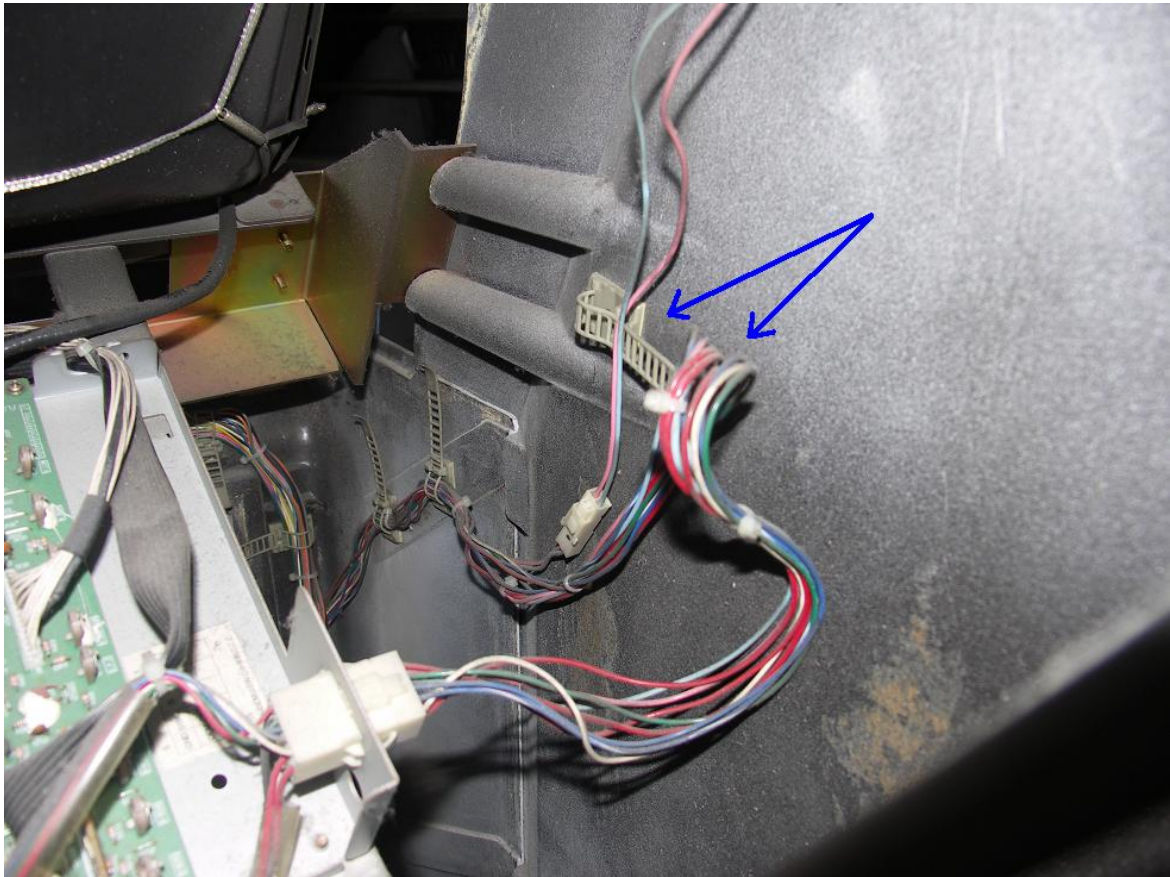




You'll see after removing the first bolt that it will only be a matter of sliding off the monitor once the bolts are off.



7) With the bolts now off, time for a visual check inside for cables. On most cabs - there will be a cable that ties wires to the right hand side of the cabinet.



This picture is taken from the **back** of the cabinet looking in - so it appears on the right side. You need to undo the cable tie so that the wires hang loose.

What happens if you dont? The monitor will jerk back when you try and pull it out.

This was the only cable tie we found that was of any concern - but it won't hurt to have a visual inspection of anything that might pull or snag.

8] Lift and turn the monitor anti-clockwise. There will be holes in the frame to hook back on to the protruding bolts. I put the camera down to grab the monitor with Dave at this point - so this shows the monitor back on the frame in the vertical position.



You'll see that your pots are now on the right hand side, instead of underneath the monitor. If you forget which way to rotate back to horizontal - just remember that those pots should be underneath the monitor - hence, it's a clockwise rotate.

9) Test.



10) A small thing - but relevant. When you put the top section back on - slot the bottom part in **first**, then push back to slot in the sides.



One rotated Astro. Time taken - around ten to fifteen minutes max.

